

Technical Support Bulletin 2014-04	MMP or ITP Inductive Transmission Timeout	September 3, 2014
---	--	--------------------------

Alert Level: **CRITICAL**

Instruments: MMP and ITP with Sea-Bird IMM

Software Versions: Profiler firmware v5.00 – v5.15

Hardware Version: N/A

Subject: IMM Timeout

Summary: Inductive file transmissions can fail due to a Sea-Bird IMM timeout if more than approximately 4,500 data files are stored on the CF card.

Technical Details: Due to a Sea-Bird Inductive Communications timeout, if more than approximately 4,500 data files are stored on the CF, the firmware cannot locate data files fast enough to meet the 30 second window required by the IMM. The offload then fails. This bug was identified in Profiler firmware v5.00-5.15 and affects only SBE Inductive Transmissions when greater than 4,500 files are collected on the CF Card.

Actions: Contact McLane to get Profiler firmware v5.16 and perform the upgrade on your system. Profiler v5.16 and higher have a new CF card directory structure (Figure 1). With the new structure, the firmware can locate and send data files to the surface controller within the 30 seconds required by the Sea-Bird IMM. For more information about the new directory structure refer to the Profiler v5.16 Release Note.

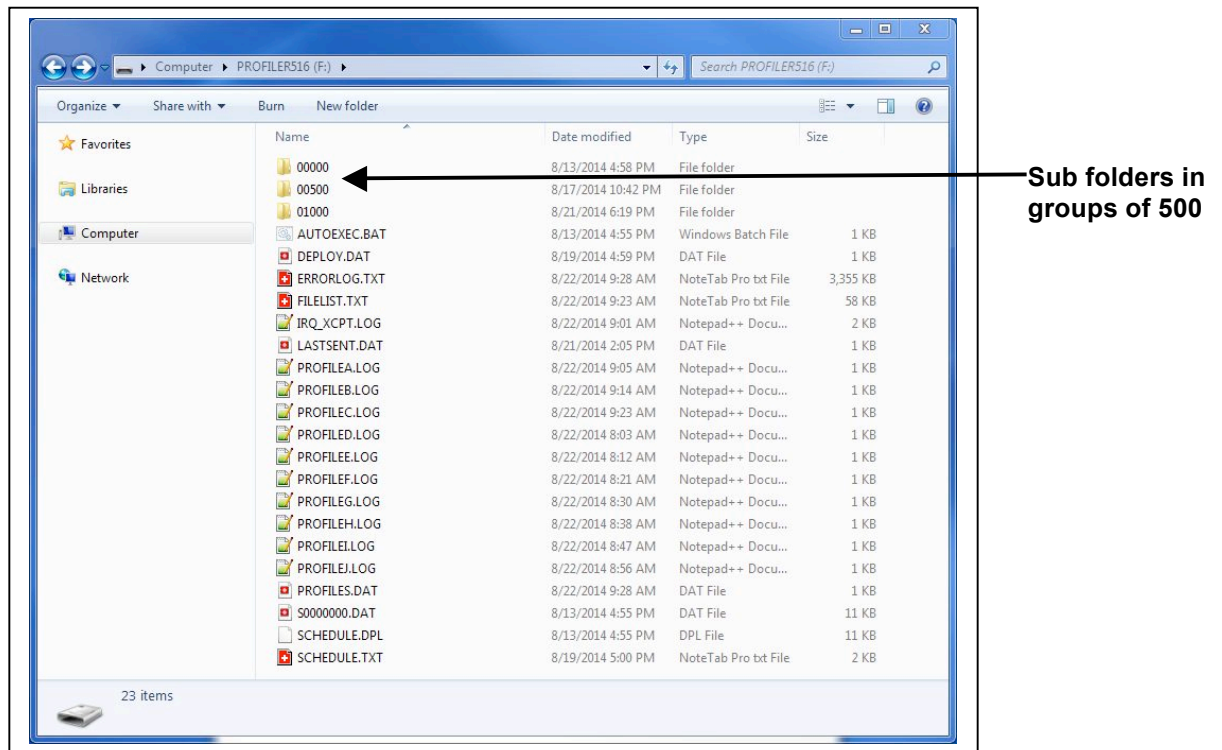


Figure 1: New Sub-Directory Structure on CF