

Technical Support Bulletin 2008-02	Flow Meter Units	August 14, 2008
------------------------------------	------------------	-----------------

Alert Level: **INFORMATIONAL**
 Instrument: WTS-LV, WTS-LVUP
 Software Versions: N/A
 Subject: WTS-LV Flow Meter Units

Summary: The WTS-LV uses calibrated mechanical flow meters in metric or English units. The metric unit flow meter measures exhaust flow in m³ (cubic meters) which is easily converted to liters. The English unit flow meter uses gallons.

Metric unit flow meters are used on all new WTS-LV samplers. The English unit flow meter is typically found on older samplers (flow meter styles can be swapped if desired).

Metric Unit Flow Meter (Current Samplers)

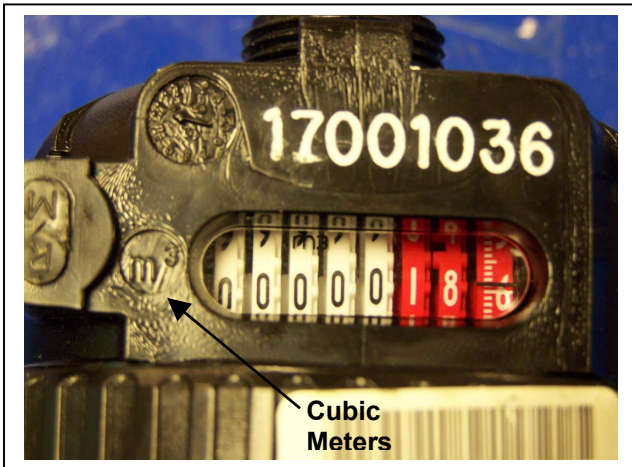


Figure 1: Reading is 0.186 m³ (or 186 liters)

English Unit Flow Meter (Older Model Samplers)

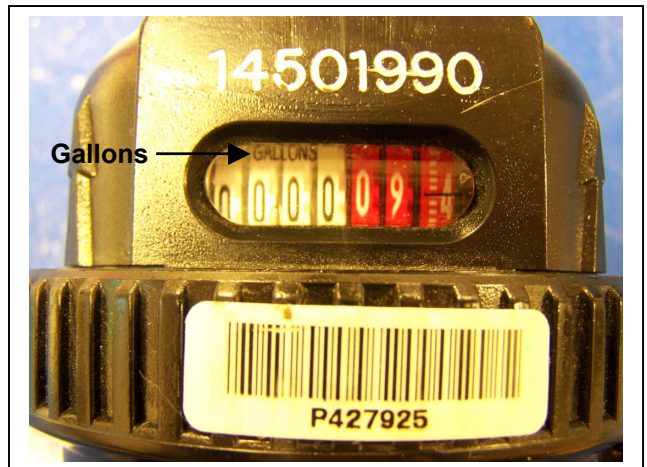


Figure 2: Reading is 94 Gallons

Confirm the type of flow meter on the WTS-LV to ensure correct flow meter readings:

- The metric flow meter is stamped m³ (cubic meters) to the left of the flow meter window as shown in Figure 1.
- The English flow meter has the word ‘GALLONS’ written inside the flow meter window as shown in Figure 2.