



- ▼ Number of samples: 13 with 250ml bottles.
- ▼ Power: 14 commercially available, user replaceable “C” cell alkaline batteries.
- ▼ Depth-rated to 400m (deep options available).
- ▼ Pop up buoy used for instrument recovery.
- ▼ Uses the same field-proven components as traditional McLane Sediment Traps.
- ▼ For more information about this sampler, see the [Sediment Traps](https://www.mclanelabs.com) pages at [mclanelabs.com](https://www.mclanelabs.com).

## SABL Sediment Trap

### Application:

The Signal Activated Bottom Lander (SABL) Sediment Trap is a low-profile sediment sampler that collects sinking particles and stores material in individually sealed sample bottles.

Remotely started and terminated sample collection allows users to target specific events. Traditional time-series calendar event deployments can also be programmed.

Samples support stormwater discharge analysis, dredging events, sediment disturbance studies, and harmful algal bloom (HAB) studies.

### Features:

The SABL collects up to 13 samples of 250ml each. The SABL uses a pop-up recovery buoy that can be remotely triggered or scheduled. Acoustically activated release optional.

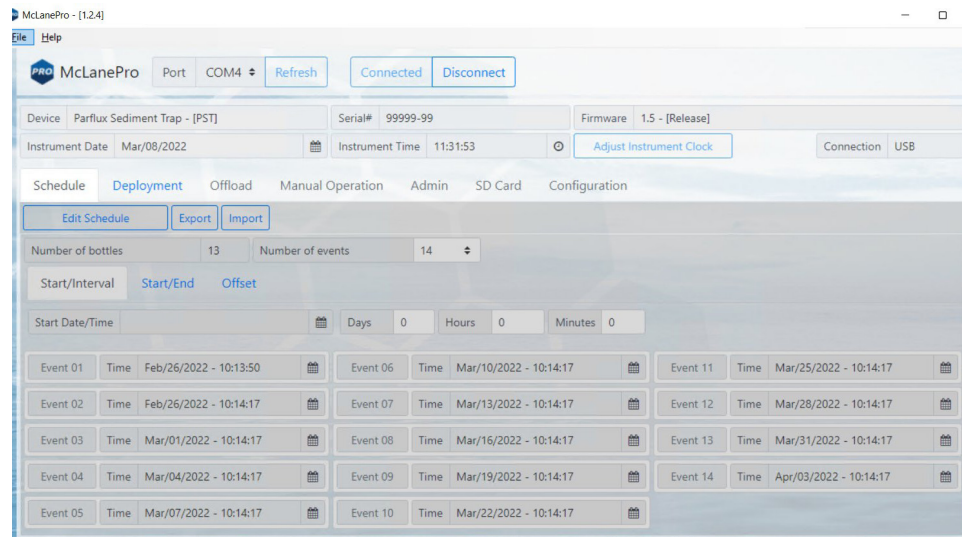
A 30.5 meter synthetic line comes standard. Other length options are available. Standard pop-up buoy release is triggered by the sediment trap electronics.

### Options:

External temperature and depth sensors, external power connection.

### McLanePro:

The SABL uses McLanePro, a graphical user interface built for McLane’s Gen3 electronics. McLanePro eases the steps of event programming, data offload, and firmware updates.



# SABL Sediment Trap Specifications

---

**DIMENSIONS:** Diameter: 167 cm (66 in)  
Height: 92 cm (36 in)

---

**WEIGHT APPROX:** In air, 250 ml bottles full: 122 kg (247 lbs)

---

**SAMPLE COLLECTION:** Number of samples: 13  
Bottle volume: 250 ml  
Aperture area and diameter: 0.125 m<sup>2</sup>, 40 cm  
Baffle material: Polycarbonate, 1.0 mm wall thickness  
Cone material: Natural polyethylene internal coating  
Baffle cells: 2.5 cm diameter  
Aspect ratio of cell (h/d): 2:5  
Included cone angle: 41°

---

**ROTARY ASSEMBLY:** Drive motor type: Electronic stepper motor  
Drive train: Direct gear train

---

**CONTROLLER:** Pressure housing: Acetal copolymer, titanium fasteners  
Power supply: 14 “C” size alkaline cells  
Communications: USB, Serial (RS-232 or RS-485 connection available)

---

**OPERATIONS:** Maximum depth: 400 m (deep options available)  
Maximum deployment time: 24 months  
Operating temperature: -4°C to 35°C (in water-nonfreezing)  
Storage temperature: -20° to 45° C (in air)

---

**FRAME:** Material: Powder-coated aluminum tripod with titanium lifting handle  
Bridle: Single titanium lifting handle 1” diameter hole. Recommended 5/8” shackle  
Fasteners: 316 SS isolated

---

**POP-UP BUOY:** Materials: PVC, 316 SS, DeepTec® solid syntactic foam  
Line Length: 30.5 meters synthetic line standard (other lengths available upon request)  
Release: Trap activated EdgeTech PORT (standard). Acoustic activated release available