

Alert Level: INFORMATIONAL

Instruments: MMP, ITP

Software Versions: N/A

Hardware Version: N/A

Subject: Troubleshooting Profiler Communication Problems for McLaneTerm

Summary: This bulletin provides troubleshooting tips and recommended procedures for serial communications problems when using McLaneTerm.

Note – McLaneTerm system requirements are Windows[®] 7 or higher. McLaneTerm is included on all new instrument USB drives and can also be downloaded on our website under Support> Utilities (<https://mclanelabs.com/software-utilities/>).

Common communication problems:

- Incorrect McLaneTerm communication settings.
- McLaneTerm needs to be restarted.
- USB adapter drivers are not installed.
- Electrical connection problems.

Continue to the sections that follow for detailed information about each of these scenarios. If you have followed all of these troubleshooting tips and still cannot communicate with your McLane instrument, contact mclane@mclanelabs.com for technical support.

Incorrect McLaneTerm Communication Settings

Incorrect McLaneTerm communication settings are the most common cause of communication problems. Make sure McLaneTerm is configured with the following communication settings using the **Tools->Settings** menu:

Port	Communication Port #
Baud Rate	9600
Parity	None
Data Bits	8
Stop Bits	1
Flow Control	None

Note – If the **McLane Settings** box is checked (Figure 1), these settings default to the required settings for McLane instruments.

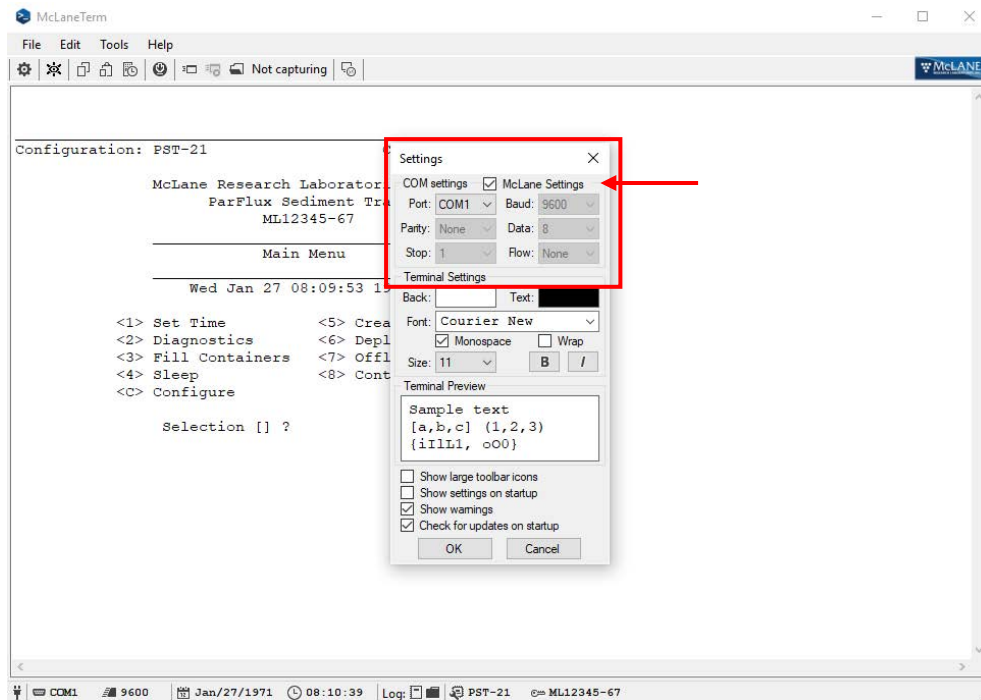


Figure 1: McLaneTerm Communications Setting

McLaneTerm Needs to be Restarted

If the USB to RS-232 adapter has been unplugged and plugged back in while a McLaneTerm window is open, McLaneTerm usually needs to be restarted. This is not always true, but if you are unable to communicate with a McLane instrument, restarting McLaneTerm ensures that the correct communication settings are being used.

USB Adapter Drivers are not Installed

Typically USB adapter drivers will install automatically when the USB adapter is inserted into a computer. There are two LEDs on the adapter that light up when you are communicating through them in McLaneTerm. If these LEDs are not lighting up while typing into McLaneTerm you may have the wrong communication port selected. If the USB adapter drivers are not installed, there will be no communication port listed for the adapter.

When using McLaneTerm, clicking the **Port dropdown** menu in **Tools -> Settings** displays the ports that are available (Figure 2). The dropdown selections will change based on the settings that are available and whether the Mac OSX or Windows platforms are being used.

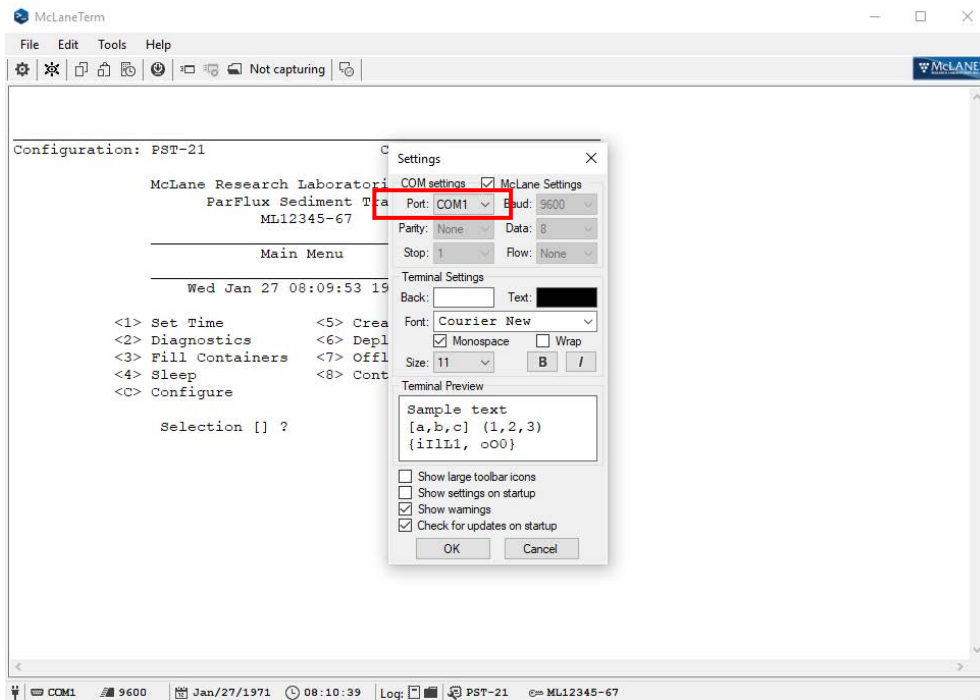


Figure 2: Available COM Ports (Windows)

To find the correct communication port when using the Windows you can also do the following:

- Open Windows Device Manager and take note of the available communication ports in the “Ports (COM & LPT)” section.
- Unplug the USB to RS232 adapter, if a communication port disappears, then drivers are installed and port that disappeared is the communication port that you should be using to communicate with your instrument.
- If you notice no difference in the listed communication ports, the device drivers are probably not installed. The drivers are usually automatically installed by Windows. If for some reason the device drivers are not installed, contact McLane for manual driver installation instructions.

Electrical Connection Problems

A bad connection or electronic failure somewhere between the computer and your McLane instrument could cause communication problems. McLane ships a loopback tester in the instrument toolkits in order to troubleshoot such problems. The loopback tester connects the serial communication transmit and receive lines together in order to test the electrical connections and communication port functionality.

If you need a loopback tester, contact mclane@mclanelabs.com.



Figure 3: Loopback Tester

The procedures that follow explain how to use the loopback tester.

1. Close any existing McLaneTerm sessions in order to start fresh.
2. Connect the loopback tester to the DB9 RS-232 port of the computer or the RS-232 adapter.



Figure 5: Connect Loopback Tester

3. After making sure the correct communication settings are being used, type anything into the McLaneTerm window. If characters are printed in McLaneTerm your communication port is functioning properly.

If no characters print to the screen:

- The Communication settings could be incorrect.
- The USB adapter drivers may not be installed.
- The USB adapter could be broken.

4. Open up the controller housing and find the communication conductors that plug into the electronics.



Figure 6: MTE Connector

5. Unplug the MTE connector from the electronics and plug them into the loopback tester.



Figure 7: Plug MTE Connector into Loopback Tester

6. Type anything into McLaneTerm. If characters print to the McLaneTerm screen then everything up to your electronics is working properly.

If no characters print to the McLaneTerm window:

- Check the connections between the computer and the bulkhead connector. Make sure all of the connections are plugged in all of the way.
- Inspect the cable and the individual communication conductors inside of the electronics housing for damage.
- Check that the individual conductors are securely seated in the black communication MTE connector by giving each conductor a light tug.