

Alert Level: **IMPORTANT**

Instruments: All Instruments

Software Versions: N/A

Hardware Version: Persistor CF2

Subject: Motocross Terminal Emulation

Summary: Run MotoCrossML.exe for terminal emulation when the CF2 Microcontroller is installed.

Technical Details: When the CF2 microcontroller is installed, use MotoCrossML.exe to communicate with your McLane profiler or sampler.

MotoCrossML.exe is program created by McLane to automate the necessary configuration for running Motocross terminal emulation with McLane instruments. McLane provides MotoCrossML.exe on the CD with each instrument and also distributes MotoCrossML.exe on the McLane website www.mclanelabs.com.

Important: Running a Motocross executable other than the program provided by McLane will not provide the necessary configuration for using Motocross terminal emulation with McLane instruments. Ensure that this executable is used when Motocross is run.

Note: Motocross has both Character Transmission and Windows editing modes. A toggle key switches between the two modes. If the dialog box shown in Figure 1 displays, it means that Motocross has been toggled for Windows editing and [CTRL]-[C] is the Windows copy function. To return [CTRL]-[C] to character transmission mode, hold the [CTRL] key and press [SHIFT]. The dialog box shown in Figure 2 will display to confirm Character Transmission Mode.

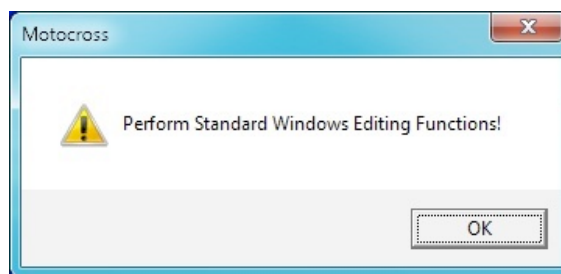


Figure 1: Toggle for [CTRL]-[C] is for Windows Editing Mode

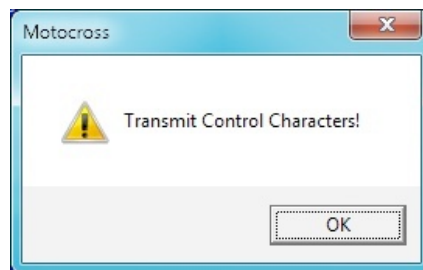


Figure 2: Character Transmission Mode